

CC0 1.0 Universal (CC0 1.0) Public Domain Dedication

This is a human-readable summary of the [Legal Code \(read the full text\)](#).

[Disclaimer](#)

No Copyright



The person who associated a work with this deed has **dedicated** the work to the public domain by waiving all of his or her rights to the work worldwide under copyright law, including all related and neighboring rights, to the extent allowed by law.

You can copy, modify, distribute and perform the work, even for commercial purposes, all without asking permission. See **Other Information** below.



Other Information

- In no way are the patent or trademark rights of any person affected by CC0, nor are the rights that other persons may have in the work or in how the work is used, such as **publicity or privacy** rights.
- Unless expressly stated otherwise, the person who associated a work with this deed makes no warranties about the work, and disclaims liability for all uses of the work, to the fullest extent permitted by applicable law.
- When using or citing the work, you should not imply **endorsement** by the author or the affirmer.

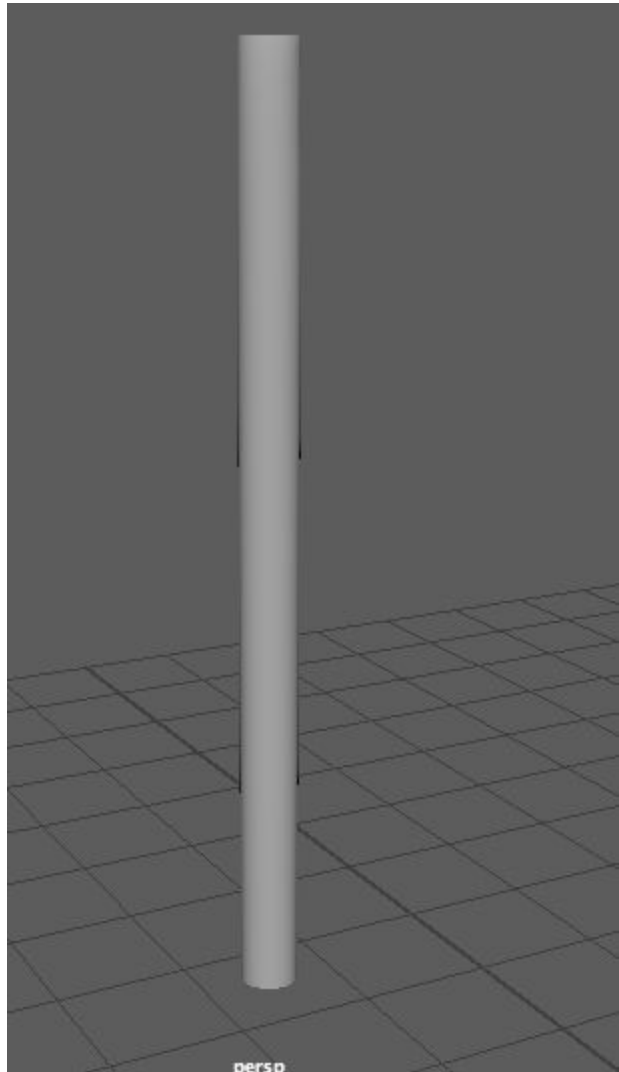
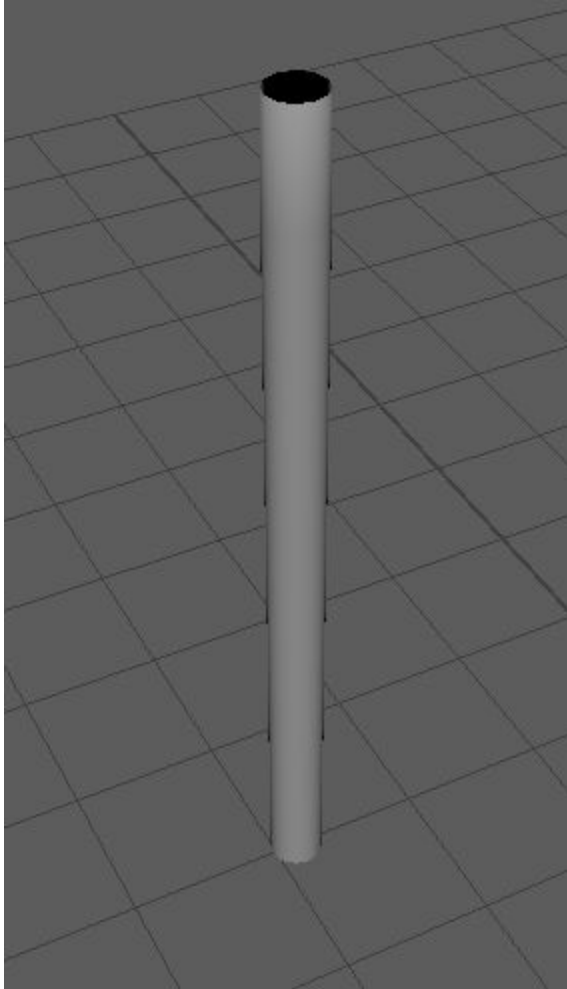
Fig. 0. The Creative Commons 0 License terms¹

¹ See works cited



Fig 1. The Bajón Grande being played²

² See works cited, other visual references were YouTube videos and thus were not included in the figures



Figs. 2 & 2.1. Resonating tubes of the Bajón Grande.

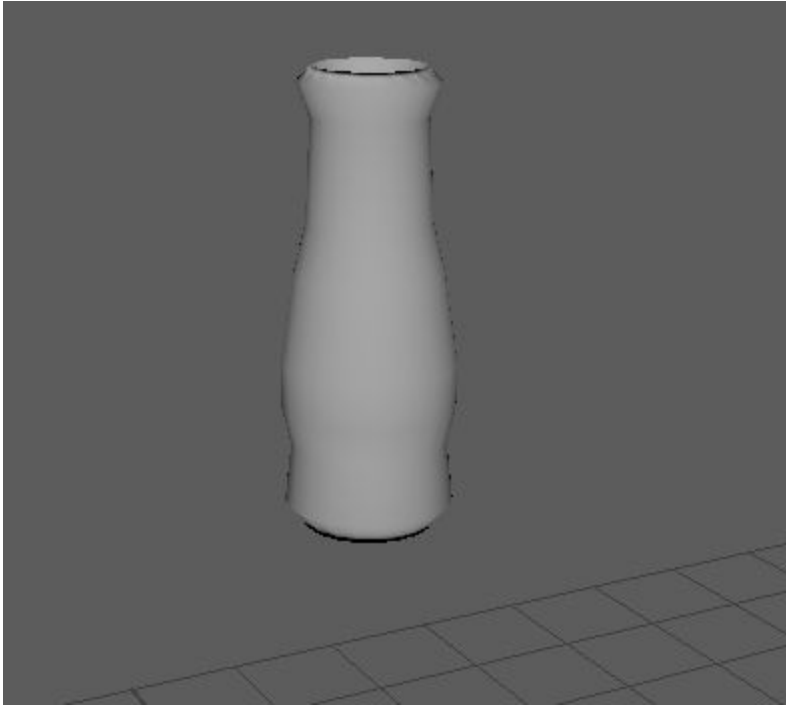
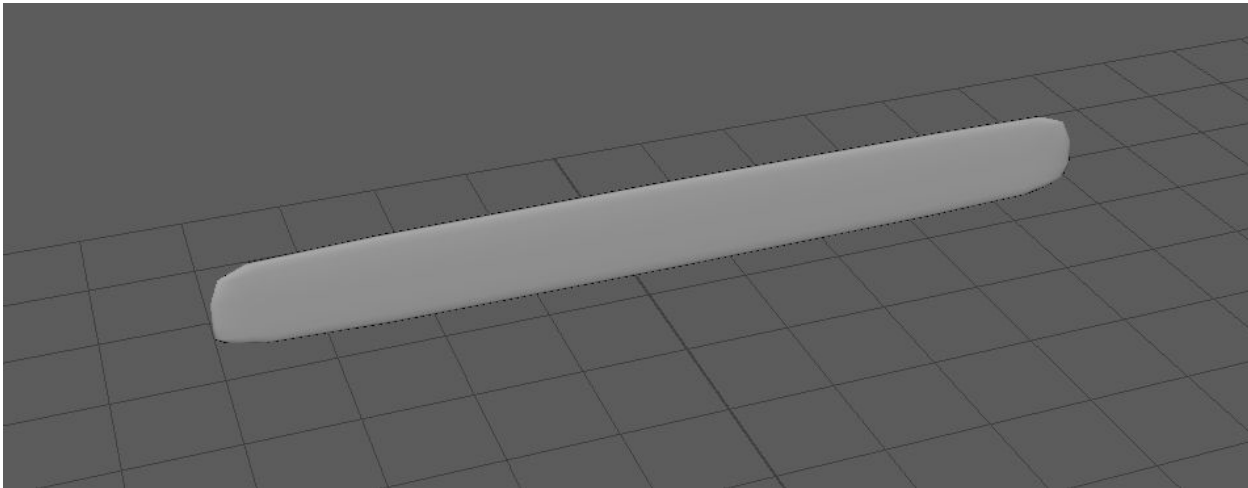


Fig. 3 (left). One of the mouthpieces which are blown into at the top of the tubes.

Fig. 4 (below). The faceplate, which began as a cube.



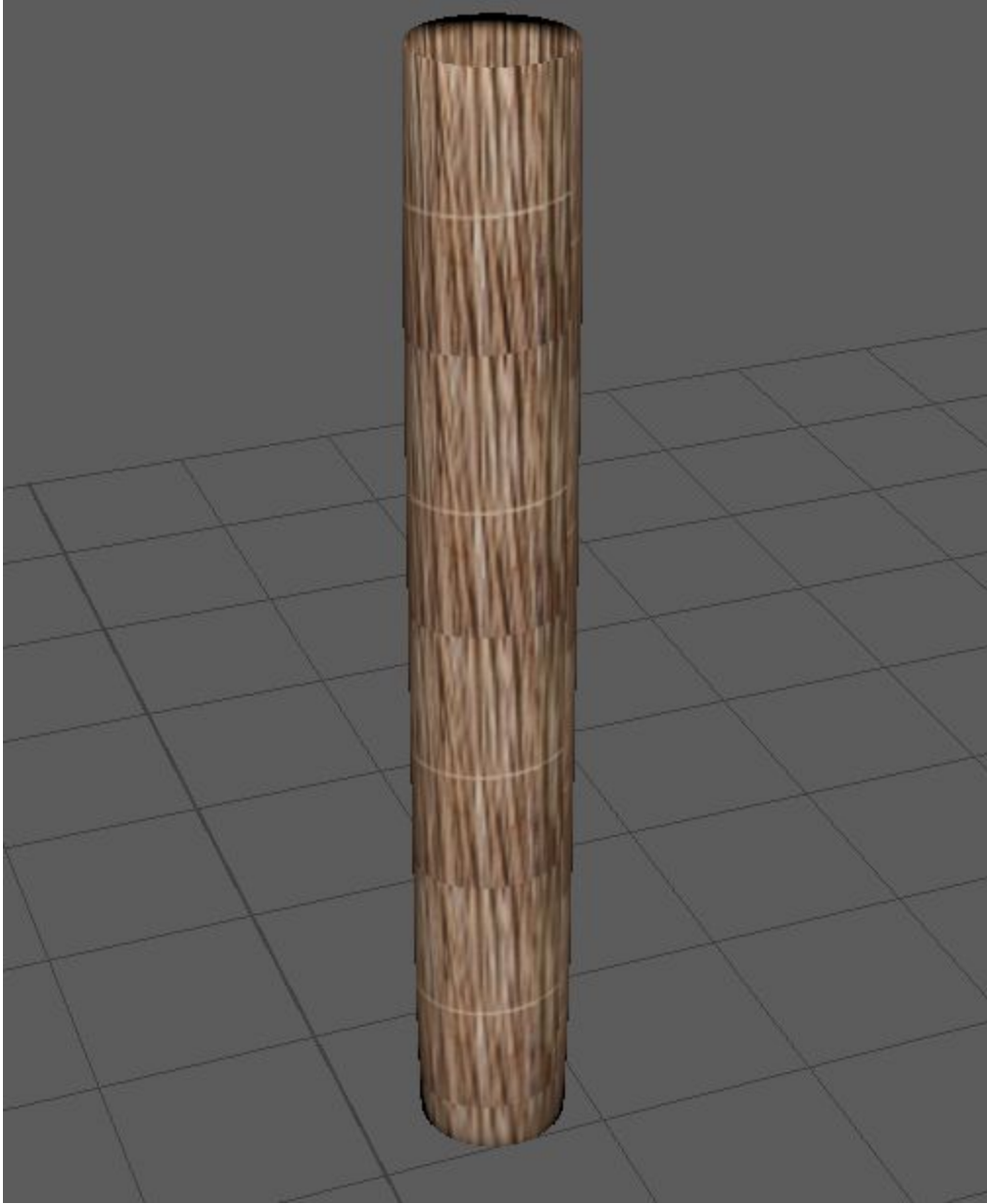


Fig. 5. One of the tubes, textured.



Fig. 6. The bamboo mat texture I used for the bark wrappings of the Bajón Grande.³

³ See works cited

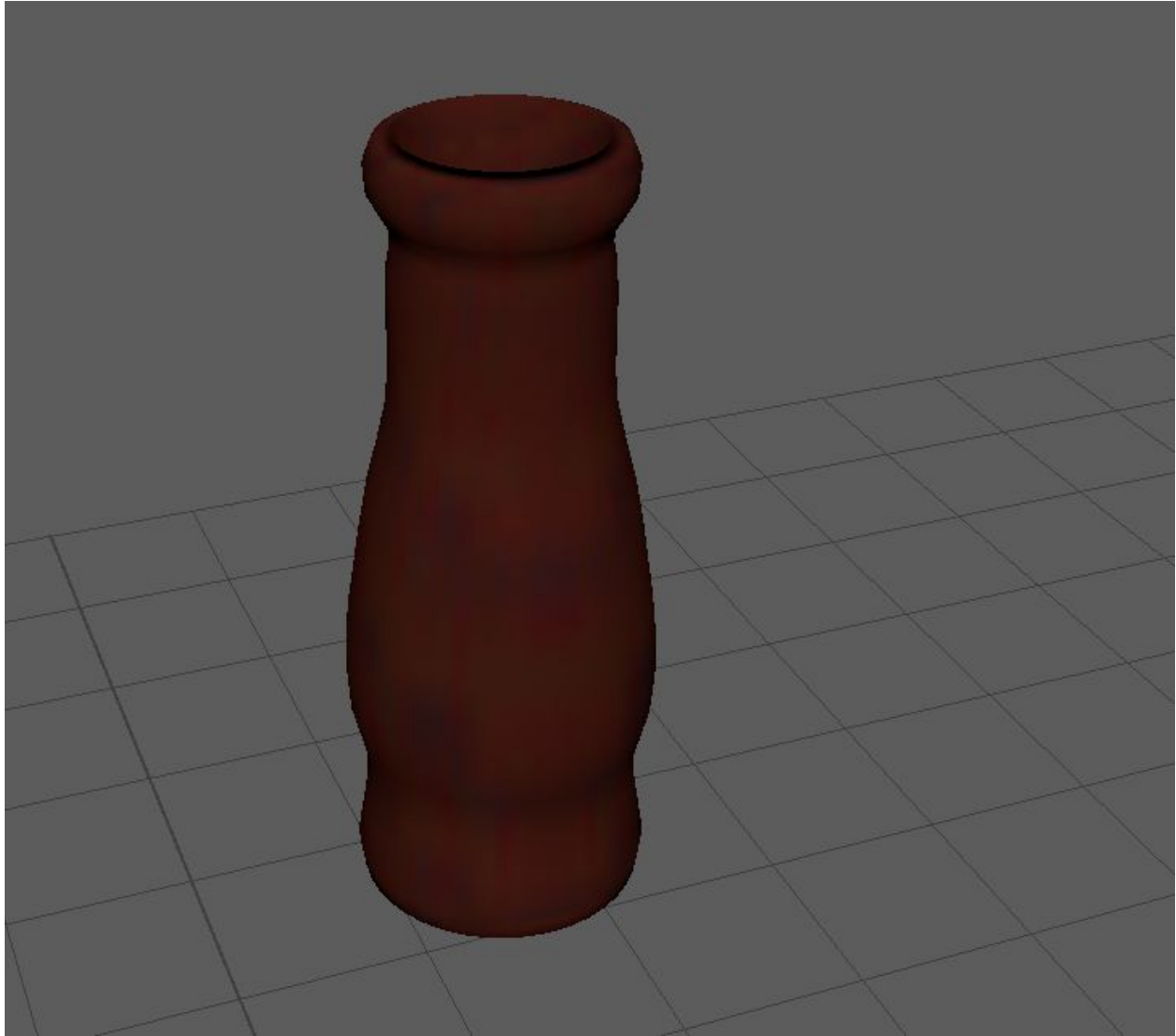


Fig. 7. Using the “Wood” texturing tool on a Lambert surface allowed me to get the texture of carved and sanded wood.

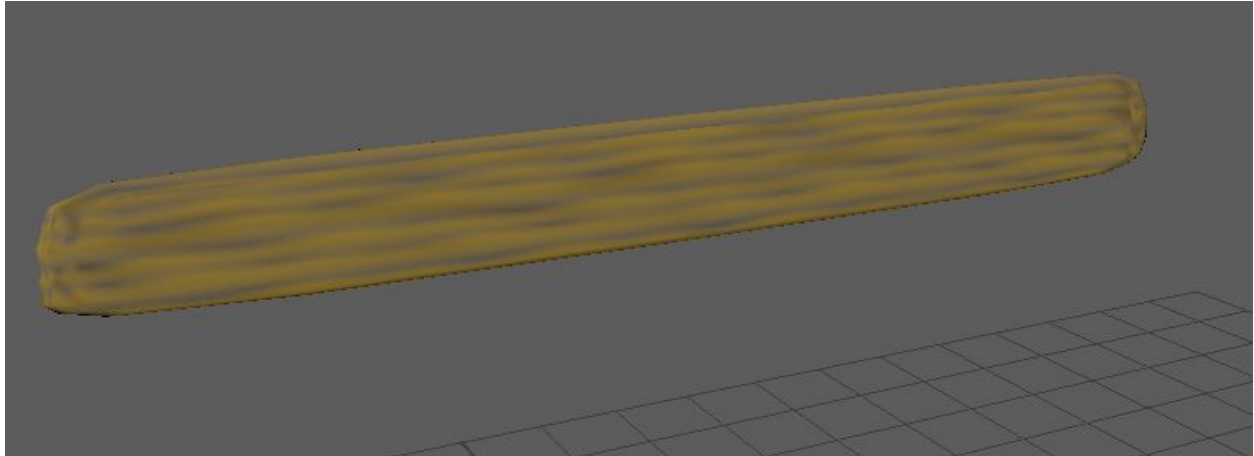


Fig. 8. I also used the “Wood” texture tool for the faceplate.



Fig. 9. The final textured model of the Bajón Grande.



Fig. 10. Settings used for the Bajón Grande patch in Apple’s Sculpture synthesizer.